



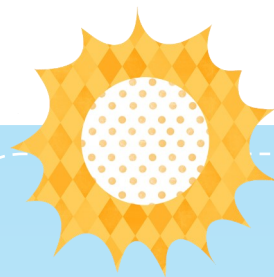
## Lake Safety & Zebra Mussel Prevention Guidelines For Guests

Welcome to Weatherby Lake! Below are a few guidelines for using Weatherby Lake while keeping our community and environment safe.

1. You must be accompanied by an Eligible Lake User at all times.
2. You may not bring your own watercraft or equipment to Weatherby Lake. This includes boats, fishing gear, pool noodles, life jackets, inflatables, paddle boards, kayaks, and all other equipment. Your host may provide equipment for you to use.
3. Swimsuits used in other fresh water must be washed and dried with heat for at least 10 minutes before use on Weatherby Lake.
4. All areas in coves behind a "No Wake" buoy and anywhere within 100 feet of shore are "Restricted Speed Areas". Watercraft in these areas must be operated cautiously and at idle speed.
5. You must be 14 years or older to operate watercraft. All children under 18 must be under adult supervision.
6. One lifejacket per person on a watercraft is required at all times, including paddle boards and kayaks.
7. Never ride on the front or upper deck of a boat while underway. Never ride on a lily pad being towed behind a boat. If towing a rider on skis or an inflatable, a red flag must be displayed on the boat.
8. Smoking, pets, and fishing are not permitted at the C-Point swim beach or swim docks.
9. Swimming is not permitted on the lake side of the swim dock.
10. Always practice courtesy with other lake users.



**"Together,  
let's keep the lake safe and  
protected from zebra  
mussels!"**



### Zebra Mussel Fast Facts

- ⇒ A single female zebra mussel can produce 1 million eggs per year.
- ⇒ Zebra mussels reach maturity at just 2 cm. Larvae are microscopic.
- ⇒ It only takes 2-3 years for zebra mussels to destroy an ecosystem.
- ⇒ Damage caused by zebra mussels includes: loss of fish, increased algae, boat and motor damage, and decreased property values.
- ⇒ Zebra mussels can attach to almost anything: boats, motors, trailers, toys, lifejackets, fishing gear, and more.
- ⇒ Dozens of lakes in KS and MO are currently infected.



**Weatherby Lake**  
Improvement Company  
*"Together, we make a difference!"*